



THE GOLDRUSH LEDGER



CHARLOTTE GEM & MINERAL CLUB

FEBRUARY 2014

THE PREZ SAYZ

Linda and I spent the Christmas and New Year holidays out west in California and Arizona. Last fall I had mentioned to Ron Gibbs that we would be driving from Los Angeles to Scottsdale and he suggested we travel on Route 10. When I asked what was so special about Rt. 10 he informed me that it's a dessert highway that cuts right through Quartzsite. The small town of Quartzsite is a Mecca for rockhounds, tens of thousands of whom gather in their RVs every winter prior to the Tucson Gem & Mineral Show to buy, sell and trade rough, slabs and specimens of all kinds. We had heard of this unique place many times and had even had the opportunity to buy materials from there through Ron (he would always spend a few days there on his way to the Tucson Show). How could we travel to Arizona and not plan a Qsite stop?

About 25 miles out of Los Angeles the scenery becomes very bleak and deserted: welcome to the Sonoran Desert - cactus everywhere, tumbleweed blowing across the landscape and occasional odd-looking rock formations here and there. Another 25 miles and the car is laboring up and down steep mountain passes with nary a gas

station or MacDonald's in sight. Suddenly there's a sign telling you that the Quartzsite exit is 2 miles ahead. A few minutes later and there it is - a gas station, a fast food convenience store and thousands of RVs parked in flat dirt fields on either side of the highway. The official opening of the sales/swap meet was a few weeks away but many of the attendees were arriving to get set up and look around to see what hot new materials would soon be available.. Fortunately for us there are local dealers who are open year round for the benefit of tourists who are making their way across the desert to Phoenix. We stopped at T-Rocks (get it?), a fenced-in field at least an acre in size that is loaded with barrels and tables full of wonderful slabs, rough and specimens. There were a variety of materials not often seen in the Carolinas and within an hour or so we had approximately 50 pounds of material that would obviously not fit in a suitcase. Flat Rate mailing boxes to the rescue! T Rocks has big piles of newspaper, hundreds of Flat Rate boxes and long work tables on which you can wrap your new treasures and box and label them. They include the flat rate charge in your invoice and will take the box to the post office for you the next day. By the way, there's a discount to be had if you use cash rather than a credit card.

I am particularly anxious to get to work on the incredible Mongolian Turquoise and Bumble Bee Jasper rough that I was fortunate enough to acquire. A few years ago at tailgate night at William Holland. I came across a dealer who was

...continued on page 2

TABLE OF CONTENTS

- | | |
|-----|-----------------------|
| 1-2 | The Prez Says |
| 2 | Note of Gratitude |
| 4-5 | Jasper Identification |
| 7 | Wire Wrapping Class |
| 8 | Field Trip Info |
| 9 | Upcoming Shows |



2014 CGMC OFFICERS & BOARD

President

Murray Simon
msimonnc@gmail.com
(704) 668-5658

Vice President

Lindsay Werden
Lwerden@mindspring.com
(704) 542-6270

Secretary

Vickie Glover
www.stitchwitt@bellsouth.net

Treasurer

Vivian Philson
Philson05@gmail.com

Directors at Large

Mary Fisher
mefisher@att.net
Brad Glover
glov4305@bellsouth.net

Web Master

Kim Gwyn
gwynk@flashlink.net

Bulletin Editor:

Zach Blackburn
zachery.blackburn@hotmail.com

Past President

Jack King
jackkretired09@gmail.com

CLUB CHAIRPERSONS

SFMS Contact

Pat Walker

Geode Chair

Jimmy Strickland

Workshop Chair

Linda Simon
lsimon1@carolina.rr.com

Field Trip Chair

Vacant

Christmas Party Chair

Pat Walker

Special Events

Kim Gwyn

Children's Program Chair

Mary Fisher

selling very striking black and yellow cabochons (Bumble Bee Jasper from Java). Not only did he not have rough but he informed me that the original find was almost completely exhausted. I bought a couple of the somewhat pricey cabs from him to remind me of something I needed to find in the future. When I asked the owner of T Rocks about it he put me in touch with a local dealer who was rumored to have some. The bad news was she was out of town for the holidays: the good news was she was spending the holidays in Phoenix (our next destination) with relatives. Two days later I was sitting with her in a Phoenix Starbucks not only admiring some beautiful Bumble Bee rough but also being introduced to Mongolian Turquoise rough. The latter has traces of gold and silver in a gray matrix mixed with a beautiful deep blue turquoise. If you have an interest in unusual and unique cabbing materials, contact Win at allinvein.com and tell her Murray sent you. In the meantime, as soon as this cold weather leaves us I'm on my way out to the garage. To introduce my Genie to these great new materials.

*Murray Simon, President
Charlotte Gem and Mineral Club*

DUES ARE DUE

Just like in previous years, your club dues come up for renewal in January. They are good for one year and run \$20 for individuals or \$25 for a full family.

Please pay Vivian with a check at our monthly meeting or put a check in the mail to her address. Include a new copy of our membership form, and update any information which has changed. (Like either your e-mail address or your street address.)

Vivian Philson
5601 McCallum St.
Charlotte, NC 28226

The membership form can be obtained from the WEB site. (www.charlottegem.org) or pick up a copy at the monthly meeting. The dues are used to offset our fixed yearly costs, the meeting location rent (monthly), the WEB site, the newsletter, meeting snacks and food for our annual Christmas. They also aid in costs related to the Jr. program, and maintenance of the club library and tools. There are also classes offered before meetings, and the dues help offset those expenses.



UPCOMING FIELD TRIP

"The Charlotte Gem & Mineral Club will be hosting a dig on Saturday April 19 at the Reel (amethyst) Mine in Iron City, NC. This will be an official Dixie Mineral Council (DMC) dig which means that all clubs within the SFMS will be invited. It would be very embarrassing to have strong attendance from other clubs and poor attendance from ours. Watch for complete details in the March newsletter."

A NOTE FROM OUR UNCC SCHOLARSHIP RECIPIENT

Dear Charlotte Gem and Mineral Club Members,

Once again, I cannot begin to tell you how grateful and humbly thankful I am to all of you for selecting me to win your \$1,000 scholarship! It is such an extra special honor because it comes from your organization. I just wanted to let you know that I promise you that I will use this money to help me with my research and getting this Masters in Earth Sciences/ Geology degree -- which I am so very excited about. I just love the subject and have become obsessed with rocks, gems & minerals. I cannot believe I waited until this late in life to follow and pursue this dream!

So again, thank you all so very much for your kindness and generosity to help my dream come true!

Sincerely,
Susan Dyer

UPDATED WEBSITE

Kim Gwyn has been hard at work on our new website. It features a smooth, easy to use navigation style that is a great improvement over our previous site.

www.charlottegem.org

Give us a click or use your smart phone to scan the below QR code for a direct link to the website. Once you check it out, be sure to tell Kim how good a job he has done for us. Thanks Kim!



WIN A RON GIBBS ORIGINAL!

Members that are up to date on their dues may purchase raffle tickets to win an original Ron Gibbs "Cabtarsia" design.

This piece is a beautiful Mookaite stone bordered with black Australian Jade. It was wire wrapped in silver by our own Linda Simon.

This is a one of a kind design that you will never see again. Get up to date on your dues and buy some tickets!



WE WOULD LIKE TO WELCOME OUR NEW MEMBERS!

MICHAEL & LORRAINE ANNAcone

DEWEY & DESTA BAKER

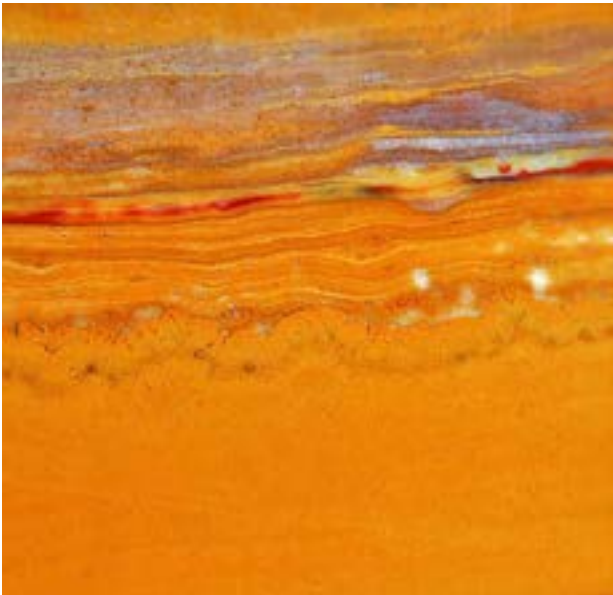
DONNA BANCROFT

BRUCE JONES

MARGARET MOORE

SCOTT & KELLY SINAGRA

KRISTI HARBAGE



Jasper Classification - Part I

by ron gibbs

I wrote four serialized articles on the formation and types of agates, and I will continue here with Jaspers and how they differ from agates. Agates are created in void spaces in silica rich lava flows. They most probably form from aqueous solutions which fill the spaces, and then through various precipitation processes create the variety of designs found within.

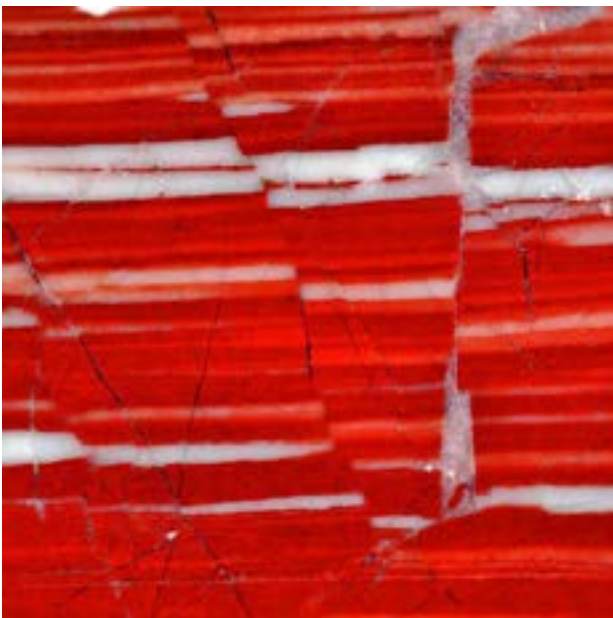
One train of thought classifies agates as the transparent to translucent variety of cryptocrystalline quartz, and jasper as the “opaque” cryptocrystalline quartz. I don’t buy this definition at all.



Jaspers are derived first from sedimentary processes followed by a “gluing” process. Sediment from a lake, ocean, or river bed is first compacted into a mass (it may be nearly solid or layered) and then the void areas between the grains are cemented together with a silica solution similar to the one that filled the agate voids.

Many times jaspers contain a record of wind or water action. Layering shows us seasonal changes, flat boundaries show us calm water, waves or repetitive patterns can indicate wave of wind blown layering caused by some kind of turbulence.

The layers of sediment are often different colors or they may be stained by minerals in the silica solution. In the first photo you can clearly see sedimentary layers with what was probably a wave pattern near the top. There are also a multitude of grain sizes in the sediment. The very best jasper are likely created from siltstone or mudstone which has very fine grain and is tightly compacted. I would guess most of the true porcelain jaspers originated from this type of material.



The second photo shows a mix of two colors with some void spaces along the sediment joints. These were filled in during the gluing process and you can see the precipitated agate center in one of them. This may have been caused by two separate silica infusions.

The last photo on this page shows clearly defined sediment layers that were later displaced by ground movement. A second silica injection healed some of the vertical cracks. Multiple

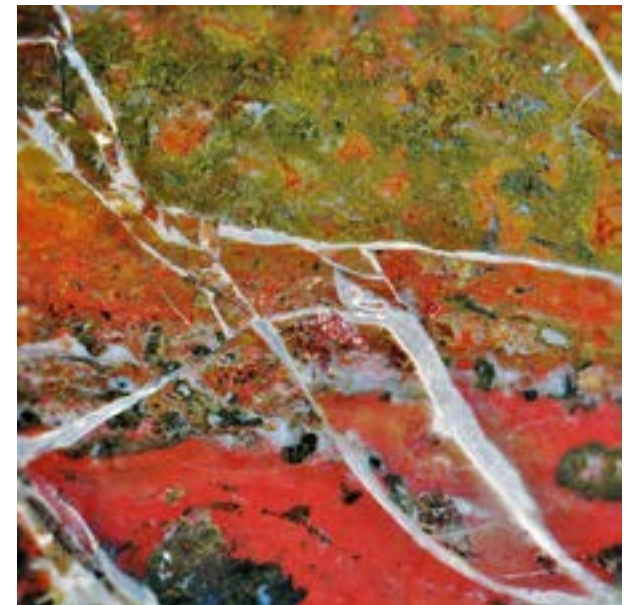
Jasper Classification - Part I (continued)

by ron gibbs

The next jaspers were formed in a strong tectonic area and were broken one or more times during their formation. The solid sediment structures appear to be broken or fractured and then refilled with silica. These jaspers have the general name of “brecciated jasper”. The top photo is known as Stone Canyon Jasper and comes from central California. It is typically a mustard yellow colored sediment (but also may contain red, orange and even green materials) with very nice white silica filling the cracks.



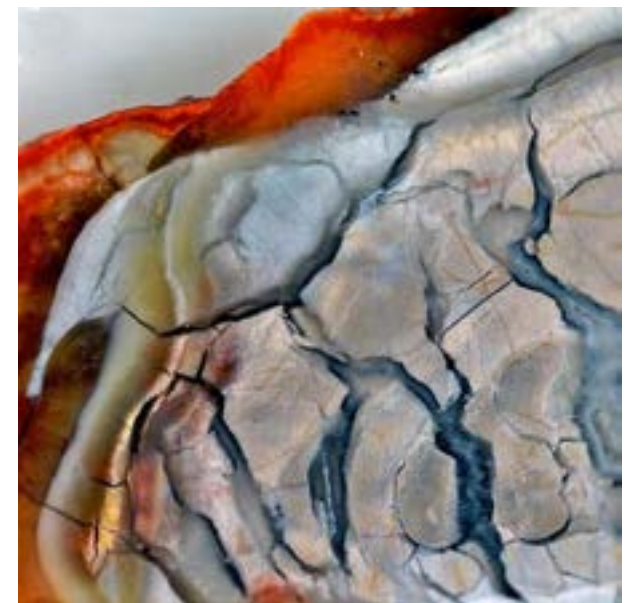
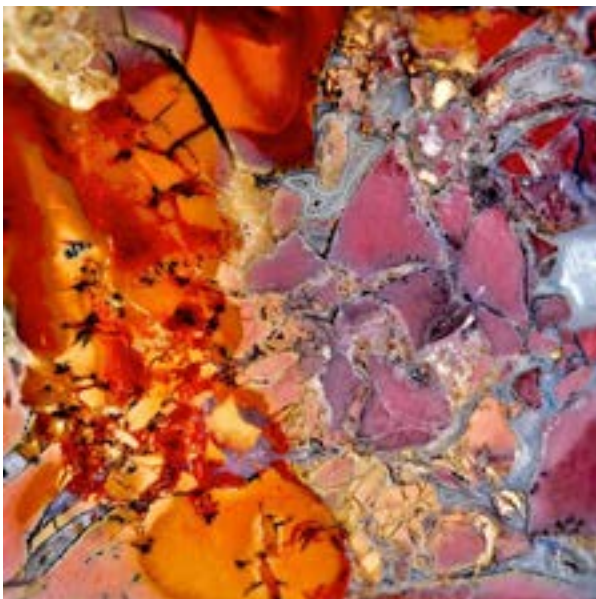
The second photo on this page comes from Brazil and is Amazon Jasper that has been brecciated. This material is usually found in rounded nodules that have been carried far from their original source via river flow.



The bottom right photo is Chapenite, from Lavic Siding in the Mojave desert of California. It is usually found in nodules with brecciated centers, and comes from another well known earthquake zone.

The bottom left photo show very heavy brecciation but comes from an unknown locality. There are many small agate structures in the cemented area with typical agate fortifications.

Next month, in Jasper-Part 2, I will continue with discussing jasper, and cover some of the orbicular jaspers.



Charlotte Gem and Mineral Club Monthly Meeting

Thursday February 20, 2014

Gathering at 6:30, Meeting to Start at 7:00

Location:

Tyvola Senior Center

2225 Tyvola Rd. Charlotte, NC 28210 (704) 522-6222

The February 20th speaker will be Michael T. Mohr, a club member and graduate student at UNCC and a recipient of the James Strickland CG&MC Scholarship. He will be speaking about his field work in the Goldfield-Superstition mountains of Arizona, his research and lab work at NCSU, and some of his adventures in between.

***Wire Wrapping Workshop prior to the meeting* 5 to 7 pm**

Linda will conduct a jewelry making class in the club meeting room. This class will make a black beaded necklace to go with the pendants made last month (as well as any other pendants you may have). If you could not attend last month's class, Linda will also teach the incredible (easy) pendant wire wrap again. Class/materials fee is \$10.

Charlotte Junior Rockhounds

Saturday February 22, 2014

10:00 - 11:00 a.m.

Location:

Matthews Community Center

100 McDowell St. Matthews, NC 28105

*Contact Mary Fisher to sign up for the class:
mefisher@att.net*

Jewelry Making Classes



Learn the art of wire wrapping from our own Linda Simon. Linda is an accomplished artisan and instructor. She and her husband have been creating and selling handmade jewelry for many years. Their work has been exhibited and sold in shows around the country. The above works of art were created by members like you during her January class. Classes are available to all up to date members.

This month Linda will conduct a jewelry making class in the club meeting room. This class will make a black beaded necklace to go with the pendants made last month (as well as any other pendants you may have). If you could not attend last month's class, Linda will also teach the incredible (easy) pendant wire wrap again. Class/materials fee is \$10.

***Next Class is Thursday Feb. 20th
from 5 to 7 prior to the club meeting***

FIELD TRIP INFORMATION

Reel Mine Dig

Saturday April 19, 2014

We are hosting a Dixie Mineral Council (DMC) dig at

The Reel Mine in Iron City, NC

Looking for Amethyst ????? DIG HERE !!!!

Reel Mine is located on the premises of:

Mr. Francis Sulphin

375 Timber Road

Iron Station, NC

(704) 736-0506

DIRECTIONS: Ninety minute drive from downtown Charlotte, NC. From I-485 find Exit 16 West, from Charlotte. Proceed on Hwy 16 Brookshire Turnpike, west to Hwy 73. Take a left on Hwy 73 and travel to Timber Road. Take a left on Timber and proceed on the asphalt until it becomes a dirt road. Travel on the dirt road until you reach the mine entrance. If the weather is bad, you can stop at Mr. Sulphin's house and park, and walk a half mile to the mine. GPS coordinates are: Longitude -81.124309, Latitude 35.456221

HISTORY: Specimen types usually found here, include amethyst, beryl, ironized quartz, smokey quartz, and associated gems and minerals. This mine has been intermittently opened and closed for many years. Mr. Sulphin has recently reached an agreement with the County on how field trips will be scheduled and conducted. Since the reopening at two digs have been conducted a month. The Charlotte Gem and Mineral Club (CGMC) has scheduled its planned dig for the Southeast Federation for Saturday, April 19, 2014. However, to comply with the County agreement,.

ASSEMBLY: CGMC officials will be at the mine entrance beginning at 8:00 AM, Saturday, April 19, 2014, to collect the fees and to provide water and instructions for the dig. You will be responsible for bringing any food, digging tools or collection containers for you and/or your party. There will be two porta-potties provided and space is available for camping depending on the weather.

COST: \$25 for each digger (children under 13 free when accompanied by a paid digger). Diggers must be current paid members of an SFMS club (insurance liability issues). This fee will be collected at the entrance in the form of cash or personal , check by the CGMC official.

RESERVATIONS: REQUIRED!!! Contact Neil Hohmann at gisusainc@aol.com, or Chuck Borawa at chuckborawa@gmail.com.

EQUIPMENT: Hand digging tools (shovels, spades, picks, post holes diggers, forks, rakes, and other similar digging utensils and equipment are to be used. No large electrical drill hammers, backhoe, ditch digger, or motorized digging or drilling equipment will be allowed.

COMMENTS: There are many members of our club, including Chuck, Jack King, and others who have been to this mine, and your attendance at the February 2014 Charlotte Gem and Mineral meeting will avail you ample information and a chance to talk about the dig. Phone contact for Neil Hohmann (704) 752-2889 or Chuck Borawa at (704) 545-6126



*Actual Amethyst Cluster From The Reel Mine

UPCOMING SHOWS

**Always Held: 2nd Weekend in March
March 7-9, 2014 Augusta, GA
25th Annual Aiken-Augusta Gem, Mineral & Fossil Show**

Dealers, Gem Dig, Geode Cutting, Treasurer Dig, Hourly Door Prize, Grab Bags, Grand Door Prize, Demonstrators.

Sponsor Clubs: Aiken Gem, mineral and Fossil Society and Augusta Gem and Mineral Society

Fri & Sat 10AM-7PM / Sun 10AM-4PM
Julian Smith Casino / 2200 Broad St. / Augusta GA
Admission: \$3/Adults; Children under 16 Free with an Adult
Co-Chair: Richard McNutt and Chris Glass

**The 34th Annual
Valley and Ridge Gem and Mineral Show
Sponsored by the Rome Georgia Mineral Society**

March 15, 16, and 17, 2013
Friday and Saturday – 10 am – 6 pm
Sunday 11 am – 5 pm

The Forum
Rome GA

FREE ADMISSION!

Gems, Jewelry, Minerals, Crystals, Geodes and Fossils. All visitors will be eligible for free Door Prizes and a Grand Prize drawing. Club members will offer mineral and fossil identification, exhibits, and demonstrations. Hope to see you there!

For more information:
Jose Santamaria, Show Chair 678.488.9560 * rogams.show@gmail.com

For Dealer Information:
Bob and Dori Madden, Dealer Chairs
706.853.1748 or 706.767.5759 * kyanite325@gmail.com

Jose Santamaria, Show Chair
Rome Georgia Mineral Society