



THE GOLDRUSH LEDGER



CHARLOTTE GEM & MINERAL CLUB

APRIL 2015

THE PREZ SAYZ

Last week Linda and I participated in the Hickory Gem and Mineral Show. We had a booth in their dealers' hall and sold cabbaging rough and jewelry. This show is put on and managed by the Catawba Valley Gem and Mineral Club. We had a booth in last year's show and I've really come to appreciate how much goes into putting on an annual event like this. There are three components to it – the front side as seen by those who buy a ticket to attend, the educational side involving busloads of school

children and scout troops and the backside featuring the club members/work crew that puts it together.

Attendees include the general public, most of whom come in with the anticipation of buying a unique lapidary specimen or piece of jewelry. Then there are the members of regional gem and mineral clubs (we came in contact with members from as far north as Maine and as far south as Florida) who attend presentations in other parts of the building throughout the three-day event.

Saturday morning). There is an Exhibition Hall adjacent to and connected with the Dealers' Hall. In addition to a number of club members' collections in display cases, this large room is set up with tables around the perimeter featuring demonstrations such as cabbaging, faceting, gem and mineral ID, gem tree making,

TABLE OF CONTENTS

- 1 The Prez Says
- 4-5 Rock of the Month
- 6 Field Trip
- 7 Upcoming Shows
- 8 Jewelry Class



The educational side of the equation is most active on Friday with busloads of elementary school kids streaming in and out from 9AM through 3PM (scout troops come and go on



2015 CGMC OFFICERS & BOARD

President

Murray Simon
msimonnc@gmail.com
(704) 668-5658

Vice President

Kim Gwyn
gwynk@flashlink.net

Secretary

Vickie Glover

Treasurer

Vivian Philson
Philson05@carolina.rr.com

Directors at Large

Mary Fisher
mefisher@att.net
Brad Glover
glov4305@bellsouth.net

Web Master

Kim Gwyn
gwynkim@gmail.com

Bulletin Editor:

Zach Blackburn
zachery.blackburn@hotmail.com

CLUB CHAIRPERSONS

Geode Chair

Jimmy Strickland

Workshop Chair

Linda Simon
lsimon1@carolina.rr.com

Field Trip Chair

Vacant

Christmas Party Chair

Pat Walker

Special Events

Carl Lockwood
aclockwood@outlook.com

Jr. Rockhounds Chair

Mary Fisher

finding specimens in the field, regional fossil digs, flint knapping, etc.. Each busload spends about 45 minutes at lectures and demonstrations followed by a “frantic” 15 minutes in the dealers’ hall shopping for souvenirs. For many, this was their third or fourth gem and mineral show and there were a number of kids who said they are looking forward to a career in geology.

To me, the most impressive thing is the team of club members who put it together; this was their 45th show! It takes the better part of a year to sign up dealers, rent the facility, arrange for 24 hour on site security, communicate with the schools, plan for food (Saturday night banquet) and refreshments for the dealers, collect booth rental fees, create an inexpensive but effective advertising campaign, recruit speakers, coordinate various committees and keep everything on schedule. And here’s the most amazing part – The Catawba Valley Gem and Mineral Club has 38 active members!!! I asked the program chairman why the club spends so much time and energy putting this all together. He immediately answered, “It’s for the kids. We love seeing them get all excited and turned on by geology. We’re passing on something to a new generation that has been important in our lives.”

Something to think about.

Murray Simon

President

Charlotte Gem and Mineral Club



Charlotte Gem and Mineral Club Monthly Meeting

Thursday April 16, 2015

Social Hour from 6:00 - 7:00

Silent Auction and Personal Collection Table 6:00 - 7:00

Meeting to Start at 7:00

Location:

Tyvola Senior Center

2225 Tyvola Rd. Charlotte, NC 28210 (704) 522-6222

Our Monthly Presentation:

Lapipalooza!

Round Robin Lapidary Presentations

An Introduction to

Cabbing, Faceting and Gem Authentication (Nature vs Man Made)

***Jewelry Making Workshop prior to the
meeting* 5:00 to 7:00 pm**

Class will be taught by Brad Glover – Basic Pearl Knotting

**Because of tool limitations, class is only available to the
first 8 students**

Charlotte Junior Rockhounds

Saturday April 25, 2015

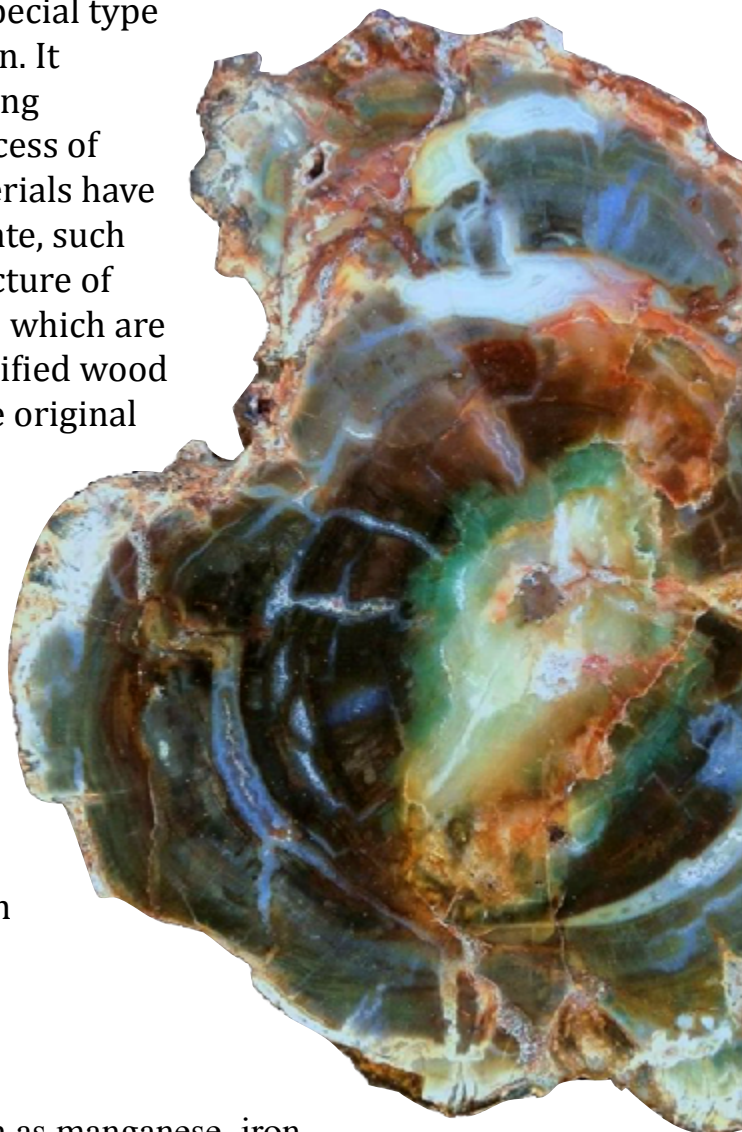
Super Secret End of the Season Big Event.

By Invite Only.

ROCK OF THE MONTH

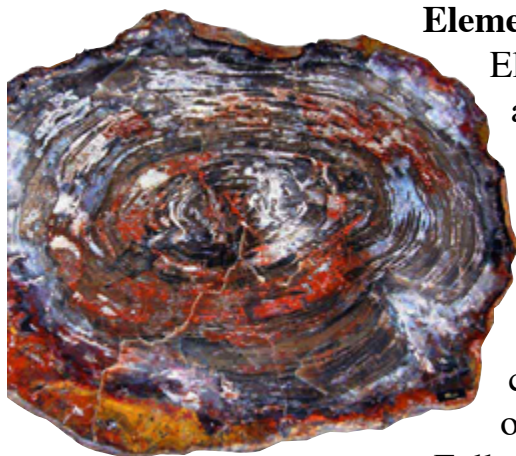
PETRIFIED WOOD

Petrified wood (from the Greek root *petro* meaning “rock” or “stone”; literally “wood turned into stone”) is the name given to a special type of fossilized remains of terrestrial vegetation. It is the result of a tree or tree-like plants having completely transitioned to stone by the process of permineralization. All the organic materials have been replaced with minerals (mostly a silicate, such as quartz), while retaining the original structure of the stem tissue. Unlike other types of fossils which are typically impressions or compressions, petrified wood is a three-dimensional representation of the original organic material. The petrification process occurs underground, when wood becomes buried under sediment and is initially preserved due to a lack of oxygen which inhibits aerobic decomposition. Mineral-laden water flowing through the sediment deposits minerals in the plant’s cells; as the plant’s lignin and cellulose decay, a stone mould forms in its place. The organic matter needs to become petrified before it decomposes completely. A forest where such material has petrified becomes known as a **petrified forest**.



Elements

Elements such as manganese, iron, and copper in the water/mud during the petrification process give petrified wood a variety of color ranges. Pure quartz crystals are colorless, but when contaminants are added to the process the crystals take on a yellow, red, or other tint.



Following is a list of contaminating elements and related color hues:

carbon – black



cobalt – green/blue
chromium – green/blue
copper – green/blue
iron oxides – red, brown, and yellow
manganese – pink/orange
manganese oxides – blackish/yellow

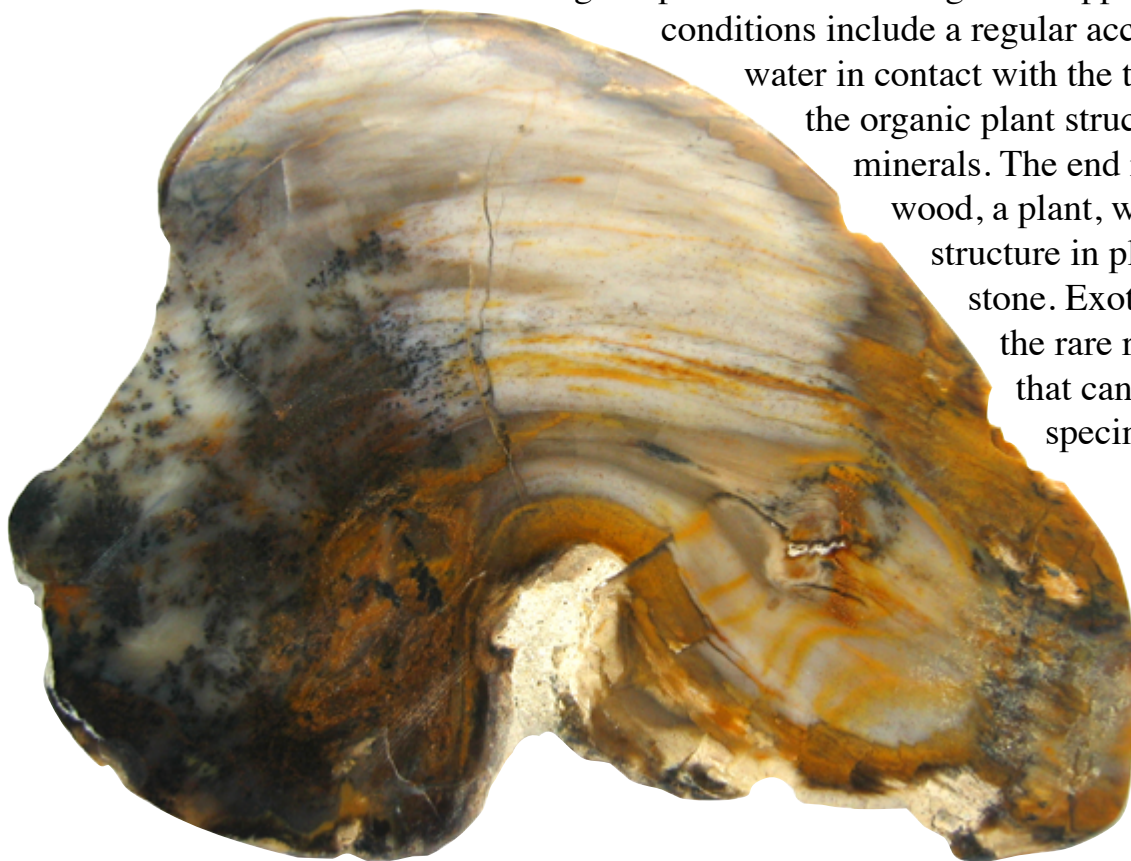


Petrified wood can preserve the original structure of the stem in all its detail, down to the microscopic level.

Structures such as tree rings and the various tissues are often observed features.



Petrified wood is a fossil in which the organic remains have been replaced by minerals in the slow process of being replaced with stone. This petrification process generally results in a quartz chalcedony mineralization. Special rare conditions must be met in order for the fallen stem to be transformed into fossil wood or petrified wood. In general, the fallen plants get buried in an environment free of oxygen (anaerobic environment), which preserves the original plant structure and general appearance. The other conditions include a regular access to mineral rich water in contact with the tissues, replacing the organic plant structure with inorganic minerals. The end result is petrified wood, a plant, with its original basic structure in place, replaced by stone. Exotic minerals allow the rare red and green hues that can be seen in more rare specimens.



From Wikipedia.com

DMC PROGRAM OF THE SFMS FIELD TRIP COMMITTEE

An Official Field Trip of the Montgomery Gem & Mineral Society (Montgomery, AL) HOST

HOGG MINE, LA GRANGE, GA

FEE SITE

DATE: APRIL 18, 2015

LOCATION: HOGG MINE, LA GRANGE, GA

HOURS: 8:45 am EST (7:45 CST) – 5:00 pm EST (4:00 CST)

FEE SITE:

\$25 per person age 16 and above. Children under 16 dig free.

MEETING POINT:

McDonalds, 2408 Whitesville Rd. LaGrange, GA 30240

YOU CANNOT JUST GO DIRECTLY TO THE MINE!

TOOLS to Bring:

Pick, Shovel, Potato Rake, Rock Hammer, Sledge Hammer, Chisels, Rock Bars, 5 Gallon Buckets, Gloves, Safety Glasses

Extra boots / shoes are helpful if it's muddy or the weather becomes damp.

There is a Port-a- Potty on site.)

COLLECTING:

Beryl, Star Rose Quartz, Black Tourmaline, and Aquamarine.

(Limit one 5 gallon bucket of material per person and one yard rock per dig.) This is a surface mine for the most part. However, there may be some deeper areas to explore. For safety reasons, you cannot dig outside of the designated areas.

FOOD:

Food, water, and soft drinks are permitted. However, all alcohol is prohibited at the mine.

Please don't show up with it. You will be asked to leave.

DIRECTIONS:

From Alabama, take I-85 N to the Georgia state line.

Proceed to exit 13. Turn left off the ramp - McDonalds is located a quarter mile up on the left, next to the Pilot truck stop.

From Georgia, take I-85 South to exit 13. Turn right off the ramp and McDonalds will be on the left.

DETAILS: We will be signing up on the inside of McDonalds. If you park on the drive-through or south side of the store, enter the door and turn to the right. Look for an area of tables for sign up. You will pay a fee of \$25 per person, fill out release forms, and get a safety briefing before going to the mine. Mr. Painter (mine owner) will take people down in groups beginning at 8:45 am EST. Sign up will extend through 9:15 am EST for late arrivals. He will come back to get others who aren't able to get there before 9:15 am EST. They can email him or call if they need him to come back for them.

WHERE TO STAY:

Nearby La Grange, GA offers many hotel choices.

There are many nearby private camp grounds as well as state owned ones since West Point Lake is nearby.

Local state parks offer a full range of camping options.

HOST: MONTGOMERY GEM & MINERAL SOCIETY

Jeff Edwards, VP / Field Trip Coordinator, (334) 312-0572 thestonehunter@hotmail.com

or email thegoldennugget@hotmail.com

For more information on HOGG MINE: www.hoggmine.com / Chris Painter rockdgr@yahoo.com

Mr. Painter will have a Mobile Rock Shop onsite for the regular scheduled digs where you can purchase rocks and minerals.

UPCOMING SHOWS

May 2-3—NORTH CHARLESTON, SOUTH CAROLINA: Show and sale; Lowcountry Gem and Mineral Society, Charleston Area Convention Center; 5001 Coliseum Drive, Exhibit Hall A; Sat. 10:00 am-5:00 pm, Sun. 10:00 am-5:00 pm; Admission is Free; A component of the North Charleston Arts Festival. Hourly Door Prizes, Lapidary Demonstrations, Fossil Dig and Geode Cracking; contact Karen Havenstein, (843) 795-2956; e-mail: webmaster@lowcountrygemandmineralsociety.org; Web site: www.lowcountrygemandmineral.org

May 6-10—FRANKLIN, NORTH CAROLINA: Annual show; Damian BellGali, Echo Valley Show Place (across from GLW); 6456 Sylva Rd. (across from GLW); Wed. 9 am-5 pm, Thu. 9 am-5 pm, Fri. 9 am-5 pm, Sat. 9 am-5 pm; Admission is Free; Wholesale and retail dealers from around the world selling minerals , fossil, gem, and rough rock; open to the public Sunday hours 9-4pm; contact Damian Bellgali, (678) 852-8273; e-mail: mandy-belghali@yahoo.com

May 8-10—FRANKLIN (28734), NORTH CAROLINA: Annual show; Gem & Mineral Society of Franklin, NC, Carpenter Community Bldg; 1288 Georgia Rd.; Fri. 10:00 am-5:00 pm, Sat. 10:00 am-5:00 pm, Sun. 10:00 am-4:00 pm; Admission is FREE; Rough and finished gemstone and jewelry along with local crafters. Club demos and raffle.; contact Norman Holbert, (828) 634-0350; e-mail: normholbert@comcast.net

May 8-10—NORCROSS, GEORGIA: Annual show; Georgia Mineral Society, North Atlanta Trade Center; 1700 Jeurgens Court; Fri. 10 am-6 pm, Sat. 10 am-6 pm, Sun. Noon-5 PM; Admission is Free; Auction Saturday at 1 PM; lapidary demonstrations; door prizes; open house at our club house to celebrate our club's 80th birthday. ; contact Shelley Stubbs, (678) 612-7293; e-mail: mayshow@gamineral.org; Web site: www.gamineral.org

Jewelry Making Classes



Learn the art of jewelry making from one of your fellow club members. The above works of art were created by members like you during a previous jewelry class. Classes are available to all up to date members.

Class will be taught by Brad Glover – Basic Pearl Knotting
Because of tool limitations, class is only available to the first 8 students

***Next Class is Thursday April. 16th
from 5 to 7 prior to the club meeting***