



THE GOLDRUSH LEDGER



CHARLOTTE GEM & MINERAL CLUB

AUGUST 2014

THE PREZ SEZ

Big disappointment with regard to having to cancel the picnic. About 5-6 inches of rain fell on Friday creating a very muddy yard with the threat of more rain on Saturday. Cancellation seemed to be the right thing to do. I wish we had been able to establish a rain date but this was the only weekend in August that Linda and I had available. Sorry if it ruined weekend plans for anyone.

Speaking of weekends, the BIG ONE is almost upon us. The Matthews Alive Festival will be held from Saturday, August 30 through Monday, September 1. The Charlotte Gem & Mineral Club has participated annually in this event for approximately 35 years, going back to when it was called The Stumptown Festival [no one seems to know the origin of that name]. The ever-faithful Hard Core Group will be out there Friday afternoon loading equipment and supplies at the trailer, followed by setting it all up in front of the Matthews Community Center Friday evening. The process is reversed late Monday afternoon with tear down and returning everything to the trailer. Which raises the question - why do these club stalwarts work so hard for this event? I'm glad you asked.

Our primary goal in participating is to raise money for scholar-

ships for UNCC and ASU geology and earth sciences students. These scholarships are awarded each year at our Christmas party and faculty members often attend. While volunteering your time in our booth look around carefully and you'll see a plaque dating back to 1977 awarded to the CG&MC by the American Federation of Mineralogical Societies for extensive scholarship related activities. Another objective at Matthews Alive is to promote the activities of our club and help it to grow. While volunteering your time in our booth you will be asked many times about where we meet and what kind of programs we offer. It is not unusual for a Matthews Alive Festival to produce at least a dozen new members (often more).

One of my personal pleasures in working the booth is to interact with the excited kids who want to buy "the best" geode (many of them are repeat customers). While volunteering your time in our booth you will have an opportunity to see the look on little faces as you reveal the interior of these ancient rock specimens from deep within the earth. So many of the toy items they have bought at the festival will be broken or discarded in a matter of days: that CG&MC geode will be on a shelf for generations to come.

Most members who have volunteered in the past agree that Matthews Alive is the best way to

get to know other members and learn more about what the Charlotte Gem & Mineral Club is all about. You quickly develop a pride of membership from this experience as a wearer of the green CG&MC tee shirt (which we'll give you) and become "one who rocks". So volunteer your time in our booth - you can always go to the beach another weekend (you may even win a beautiful petrified wood slab and stand for your efforts). See you there!!!

Murray Simon, President
Charlotte Gem and Mineral Club

TABLE OF CONTENTS

2	Birthstones
3-5	Matthews Alive
7	Field Trip
8	Upcoming Shows



**2014 CGMC
OFFICERS & BOARD**

President

Murray Simon
msimonnc@gmail.com
(704) 668-5658

Vice President

Lindsay Werden
Lwerden@mindspring.com
(704) 542-6270

Secretary

Vickie Glover
www.stitchwitt@bellsouth.net

Treasurer

Vivian Philson
Philson05@gmail.com

Directors at Large

Mary Fisher
mefisher@att.net
Brad Glover
glov4305@bellsouth.net

Web Master

Kim Gwyn
gwynk@flashlink.net

Bulletin Editor:

Zach Blackburn
zachery.blackburn@hotmail.com

Past President

Jack King
jackkretired09@gmail.com

CLUB CHAIRPERSONS

SFMS Contact

Pat Walker

Geode Chair

Jimmy Strickland

Workshop Chair

Linda Simon
lsimon1@carolina.rr.com

Field Trip Chair

Vacant

Christmas Party Chair

Pat Walker

Special Events

Kim Gwyn

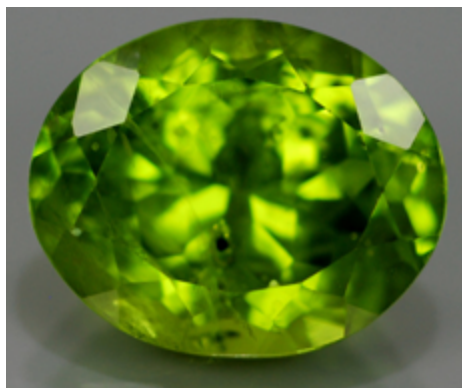
Children's Program Chair

Mary Fisher

BIRTHSTONES OF THE MONTH

Peridot

Peridot is said to host magical powers and healing properties to protect against nightmares and to bring the wearer power, influence, and a wonderful year. As peridot is a gemstone that forms deep inside the Earth and brought to the surface by volcanoes, in Hawaii, peridot symbolizes the tears of Pele, the goddess of fire and volcanoes. Today, most of the peridot supply comes from Arizona; other sources are China, Myanmar, and Pakistan. This gemstone comes in several color variations ranging from yellowish green to brown, but most consumers are attracted to the bright lime greens and olive greens. Peridot, in smaller sizes, often is used in beaded necklaces and bracelets.



Sardonyx

Sardonyx is a form of onyx and is recognized by its layers of reddish brown and white banding. It was popular with the ancient Greeks and Romans who carried into battle talismans of sardonyx engraved with images of heroes such as Mars or Hercules, believing that this would bring courage and victory. Because of its attractive banding, sardonyx has long been used to fashion cameos (carved raised figures) and intaglios (the reverse of cameos). This gemstone is found throughout the world. The most attractive specimens are found in India, but material also is mined in Czechoslovakia, Brazil, Uruguay, Germany, and in the United States. - See more at: <http://www.americangemsociety.org/august-birthstones#sthash.Qb4gOQtD.dpuf>



***Charlotte Gem
and Mineral Club
Monthly Meeting***

*Thursday August 21, 2014
Gathering at 6:30, Meeting to Start at 7:30*

Location:

*Tyvola Senior Center
2225 Tyvola Rd. Charlotte, NC 28210 (704) 522-6222*

Speaker Neil Hohmann will be presenting:

Keep Digging

A generalized presentation with tips, tools, displays and digital depictions. He will discuss the processes involved in selecting a site and collecting crystal specimens. He will also present care and cleaning required of crystal specimens.

*****There will not be a Jewelry
Workshop before the meeting.*****

*****No meeting in September.*****

How you as a CGMC member can help at Matthews Alive



Our club's participation in Matthews Alive 2014 is scheduled for August 29 through September 1. We need help from our members to make this a success. Since we have less than a month before show time, your immediate attention is needed.

From past events, we have determined that we need 7-9 members per time slot to be effective in greeting and taking care of festival patrons.

Please remember that Matthews Alive Festival is our majority money maker for the year. Your help is needed to make this show a winner for us.

The income from this festival provides money for (A) scholarships for 2 college students as well as (B) the scholarships to the regional lapidary schools for 2 of our members. Additionally, we have to cover the other expenses for the weekend, such as booth rental, supplies such as saw blades and materials for the sluice as well as geodes.

How can you help?

First, you can sign up to work during one of the time segments that doesn't have enough volunteers.

Second, you can come ready to promote our booth as well as our club. We have the opportunity to let people know what our club (and club members) do. This is a valuable source for reaching potential new members.

What do you get out of it?

You get to spend time with other members, friends you already have and ones you get to make.

You get to meet the people who come by the booth, as customers, or possibly new members.

The satisfaction of knowing you did something important for our club. Donating your time and effort to make our club a little bit better.



Thank you,

The CGMC Board Members



Directions:

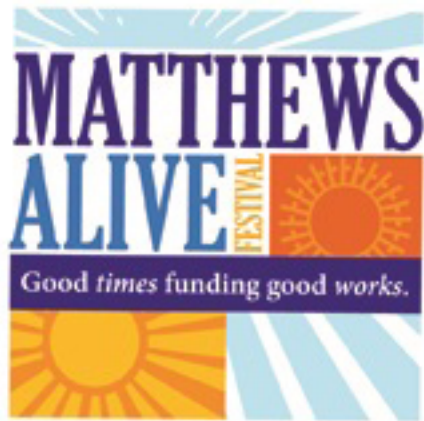
From Interstate 77 South: I-77 to I-485 East and follow to Matthews exit. Turn left onto East John Street. Take East John Street to Historic Downtown Matthews.

From Interstate 85 South: Follow I-85 to I-77 South to Brookshire Boulevard East. Follow to the U.S. 74 (Independence Boulevard) exit, and exit left. Take U.S. 74 to Matthews, turning right on Sam Newell Road, and follow across Matthews Township Parkway (N.C. 51) to North Trade Street and Historic Downtown Matthews.

Parking

People with disabilities may use the “horseshoe” parking area located at the side of the Matthews First Baptist Church, off of Sadie Drive. If those spaces are filled, there are handicapped accessible spaces in our Town public parking areas (see below) and at adjoining businesses that are closed during festival hours. Our festival parking attendant can direct you to open spaces.

Free public parking areas are located by the train tracks at North Trade Street and Charles Street. Matthews Station offers parking in front of and behind Town Hall (across from public parking). Parking is also available at many businesses along John and Trade Streets, Matthews Presbyterian Church on John Street and Matthews United Methodist Church on South Trade Street (accessible from Fullwood Lane off N.C. 51)



Historic Downtown Matthews, NC



FIELD TRIP

DMC Program of the SFMS Field Trip Committee

An Official Field Trip of the County Gem and Mineral Club, Inc. (Marietta, GA) (HOST)

An Official Field Trip of the Charlotte Gem and Mineral Club

9:30 AM to 3:30 PM

Saturday, September 20, 2014

Sandersville, Georgia

Participation limited to 37 due to parking, you must register for this trip !

Collect: Fossils: sand dollars, skate teeth, shark teeth, vertebrate bone (such as Manatee), and a host of marine invertebrates (clam, oysters, snails). You will also find chert at this location. There will be about a 1/4 mile hike and a bit of a scramble down to the creek where we will be collecting, from the parking area.

Geology: The fossils are in the Sandersville Limestone and upper Eocene (Jacksonian) marine unit which is about 28 to 26 million years old. The base of the Sandersville Limestone is the Twiggs Clay where the Georgia Tektites (Georgiites) have been determined to be coming from.

Tools: Two screens: as 1/4 inch hardware cloth to pick through the coarser sand on the top screen with window screen on the bottom for the finer sand, but you can use a colander. Some of the shark teeth are an inch long and others are less than 1/4 in long. Shark and skate teeth will be found by sieving the sand and gravel in the stream. You will want a small or larger shovel to dig the gravel out of the stream to scoop into your colander or screens. You will want a chisel and hammer to get the sand dollars out of the rock. One of our participants brought a regular shovel to dig into the stream bed and found some large manatee bones as well as shark teeth. You will also want to bring something to carry your finds in. Bags and small containers are great for shark and skate teeth. You may want to bring paper to wrap sand dollars to put in your bucket, but they are very solid. You will need waterproof boots to wade in the stream, and an extra set of clothing in case you get wet. Long waterproof gloves are nice to have. Please bring fluids, and a snack or your lunch. We will provide hand wipes so you can clean your hands before you eat.

Children: 12 and over with adult supervision are welcome. No dogs will be allowed.

Directions: The trip is to Sandersville, GA which is in east central Georgia. Sandersville is east of Macon and Milledgeville in the kaolin belt of Georgia. We will email directions and the meeting place to the first 37 participants who register for the trip by emailing ccgms.fieldtrips@gmail.com.

Special: We are pleased that our favorite Paleontologist and CCGMS Field Trip Team Leader, Dr. John Anderson will coming back to GA to lead this trip for our club. He now serves as the Dean of the School of Science, Technology, Engineering, and Mathematics at Virginia Western Community College in Roanoke, VA. John is wonderful at answering questions and helping trip participants, making field trips a very special experience for fossil buffs. We will also have two of our geologists available to help with questions and collecting techniques.

Contact : CCGMS Field Trip Team Coordinator, Toby Stewart at ccgms.fieldtrips@gmail.com to secure your spot on this trip. The meeting place and contact number will be emailed to confirmed participants.

UPCOMING SHOWS

August 29- September 1—HENDERSONVILLE, NORTH CAROLINA: Annual show; Henderson County Gem & Mineral Society; Whitmire Center; Lily Pond Rd.; Fri. 10-6, Sat. 10-6, Sun. 10-6, Mon. 10-5; adults \$4, children (under 12) free; dealers, demonstrations, exhibits, raffles, door prizes; contact Diane Lapp, 22 Foxmoor Ct., Etowah, NC 28729, (828) 775-8098; e-mail: dlapp_2000@yahoo.com; Web site: www.hcg-ms.org

August 29- September 1—RALEIGH, NORTH CAROLINA: Retail show; Treasures of the Earth Inc.; North Carolina State Fairgrounds; Kerr Scott Bldg., 1025 Blue Ridge Blvd.; Fri. 12-6, Sat. 10-6, Sun. 11-6, Mon. 10-5; adults \$5, students (16 and under) free with adult; 14K and sterling silver, classic, contemporary and handmade jewelry, loose stones, beads, findings, pearls, minerals, crystals, lapidary supplies, jewelers, wire wrappers, jewelry design and repairs on site; contact Jane Westbrook, PO Box 59, Gloucester Point, VA 23062, (804) 285-4281; e-mail: jane@treasuresoftheearth.com; Web site: www.treasuresoftheearth.com

September 5-7—WINSTON-SALEM, NORTH CAROLINA: Annual show; Forsyth Gem & Mineral Club; Education Bldg., Dixie Classic Fair Grounds; 27th St., Gate 9; Fri. 10-7, Sat. 10-7, Sun. 12-5; adults \$2, children (through grade 12) free with adult admission; Saturday presentation on North Carolina meteorites, exhibits, gold panning, geode cutting, grab bags; contact W.A. Marion, 1163 Bear Creek Church Rd., Mocksville, NC 27028; e-mail: Marional@yadtel.net; Web site: www.forsythgemclub.com

September 27-28—DURHAM, NORTH CAROLINA: Wholesale and retail show; Intergalactic Bead Shows; Durham Convention Center-Jr Ballrooms; 301 W. Morgan St.; Sat. 10-5, Sun. 10-5; adults \$5 Sat., \$4 Sun. (\$2-off coupon on Web site), children (12 and under) free; precious and semiprecious gemstone beads, sterling silver, findings, freshwater pearls, hand-blown glass beads, vintage beads, crystals, delicats, gemstone chain, findings; contact Chris Murray, 3865 Lawrenceville Hwy., Ste. 107, Lawrenceville, GA 30044, (888) 729-6904; e-mail: contact.beadshows@gmail.com; Web site: www.beadshows.com

October 3-5—DALLAS, NORTH CAROLINA: Annual Gaston Gem Show; Gaston Gem, Mineral & Faceters Club; Gaston County Park; 1303 Dallas Cherryville Hwy.; Fri. 9-6, Sat. 9-6, Sun. 9-5; free admission; dealers, minerals, fossils, gemstones, wire wrapping, geodes, jewelry, sluice; contact Rick Perkins, (704) 288-9091; Web site: <http://gastongemclub.weebly.com>