



# THE GOLDRUSH LEDGER



CHARLOTTE GEM & MINERAL CLUB

MARCH 2017

## THE PREZ SAYZ

Our club sponsored dig is coming up April 15 at Sharpes Emerald Prospect in Hiddenite, NC. This will be mentioned a few more times before then, mostly because we don't get the opportunity to have a dig very often. The number of sites available for digging have decreased as well as the quality of rocks available. Please take advantage of this opportunity, another one may not come along in the near future. More information is available on our website and at theirs :

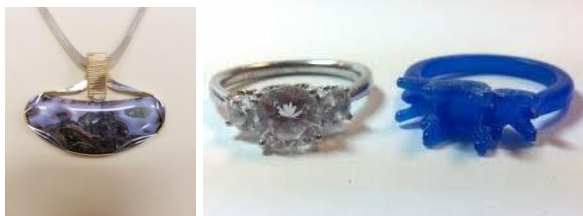
<http://www.wncrocks.com/resources/Collecting%20site%20sharpes%20home.html>



I try to update our website with digs available in our area. The main problem I run into is that most scheduled digs are more than 3 hours away, which doesn't seem to be easily accessible to our members. This is why there are no digs listed south of Atlanta or west of Asheville.

As spring nears, we all want to get out and do things. Keep in mind that we are adding classes at the workshop. The bordered cabochon class will be on the schedule in the near future, so be sure to get in your beginning class so you will be qualified to take it. And remember, the .

the wire wrapping classes will teach you how to use the cabochons you are (or will be) making.



Casting will also be available soon. This could be another way to utilize the stones that you expertly cut in a previous class. Let's use this spring to learn something new.

Kim Gwyn  
President  
Charlotte Gem & Mineral  
Club

**YEARLY DUES ARE DUE. IF YOU HAVEN'T RENEWED THEM YET, PLEASE DO SO AT THE MEETING.**

**\$25 FAMILY MEMBERSHIP  
\$20 INDIVIDUAL MEMBERSHIP**

## TABLE OF CONTENTS

- 1 Prez Sayz
- 2 Workshop Schedule
- 3 Meeting schedule
- 4 Dues Notice
- 5-7 Gem of the Month
- 8-9 Upcoming Digs and Shows



**2017 CGMC  
OFFICERS & BOARD**

**President**

Kim Gwyn  
[gwynkim@gmail.com](mailto:gwynkim@gmail.com)  
(803) 370-0244

**Vice President**

Martha Rogers  
[Charlottegemclub@gmail.com](mailto:Charlottegemclub@gmail.com)

**Secretary**

Vickie Glover

**Treasurer**

Ellen Gwyn  
[Ellengwyn1@gmail.com](mailto:Ellengwyn1@gmail.com)

**Directors at Large**

Brad Glover  
Mary Fisher

**Web Master**

Kim Gwyn  
[gwynkim@gmail.com](mailto:gwynkim@gmail.com)

**Newsletter**

Mary Graham

**Past President**

Murray Simon  
[msimonnc@gmail.com](mailto:msimonnc@gmail.com)  
(704) 668-5658

**CLUB CHAIRPERSONS**

**Geode Chair**

Jimmy Strickland

**Workshop Chair**

Martha Rogers  
[Charlottegemclub@gmail.com](mailto:Charlottegemclub@gmail.com)

**Christmas Party Chair**

Mary Fisher

**Special Events**

Anne Lockwood

## WORKSHOPS AT THE DAIRY

This is home to our workshops.



### Art in The Dairy

7701 Tuckaseegee Rd.

Charlotte, NC 28214

### Currently scheduled classes:

(Classes are from 9:00 am to Approx 4:00 pm)

#### Please Note:

For **insurance** purposes, 2017 CGMC dues must be paid or be current before taking class. Non-members must join.

(\$20/yr single membership, \$25 family membership)

**Faceting Classes** are available on an “as available” basis. If you are interested in **learning** to facet, contact Kim at [gwynkim@gmail.com](mailto:gwynkim@gmail.com) to arrange a time(s).

\*\*\*\*\*

Anyone who wishes to **sign up** for any of our classes should contact

**Martha Rogers** at :

**[charlottegemclub@gmail.com](mailto:charlottegemclub@gmail.com)**

**March 18** Wire Wrap (**3 openings**) with **Linda Simon**

\$30 Class Fee with a \$10 materials fee

Class Starts at 9am, breaks for lunch around noon

**March 18** Cabochons (**0 openings**) with **Murray Simon**

**\$40 Class Fee**

Class starts at 9 am, breaks for lunch around noon,

(Bring a sandwich & Beverage)

\*\*\*\*\*



# ***Charlotte Gem and Mineral Club Monthly Meeting***

***Thursday March 16, 2017***

***Social Hour from 6:00 – 7:00***

***Meeting to Start at 7:00***

## ***Location:***

Tyvola Senior Center  
2225 Tyvola Rd., Charlotte NC 28210 (704)  
522-6222

## ***Our Monthly Presentation:***

### ***Our very own Jimmy Strickland***

***Fresh back from his Tuscon trip, he will be talking  
about his experience there, as well as showing  
pictures.***

## ***Junior Rockhounds***

***March 25, 2017***

***Field Trip to the Hickory Gem and Mineral Show:***

***Go anytime, but if you want to meet as a group, we'll meet at 10AM***

***Saturday March 25 at the ticket desk.***

***For any students who are available to go on Friday, there are  
educational/student programs available.***



# ANNUAL DUES ARE DUE

Dues are now officially past due! Ok, last reminder for this year, your club dues are now officially past due if you have not yet paid them. Look at the fun you'll be missing at The Dairy without that payment. By the way you cannot attend our super-duper fieldtrip in April unless you are a paid member.

## RENEW AND WIN!!!!

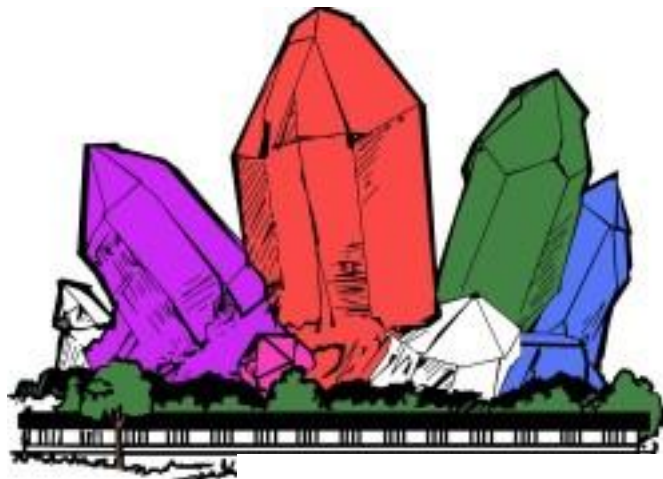
\$25.00 for your entire **family**

or

\$20.00 for an individual membership to:

**Charlotte Gem & Mineral Club**  
c/o Ellen Gwyn  
1293 India Hook Rd  
Rock Hill, S C 29732

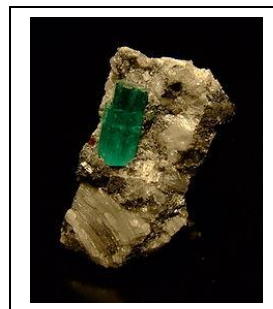
When you renew your dues, you can enter to win a class of your choice at the William Holland School of Lapidary Arts. This includes a class of your choice with the usual room and board for the week



# GEM OF THE MONTH

## EMERALD

From Wikipedia, the free encyclopedia



**Emerald** is a gemstone and a variety of the mineral beryl ( $\text{Be}_3\text{Al}_2(\text{SiO}_3)_6$ ) colored green by trace amounts of chromium and sometimes vanadium.<sup>[2]</sup> Beryl has a hardness of 7.5–8 on the Mohs scale.<sup>[2]</sup> Most emeralds are highly included,<sup>[3]</sup> so their toughness (resistance to breakage) is classified as generally poor. Emerald is a cyclosilicate.

## PROPERTIES DETERMINING VALUE



Emeralds, like all colored gemstones, are graded using four basic parameters—the four Cs of Connoisseurship: *Color*, *Clarity*, *Cut* and *Carat weight*. Before the 20th century, jewelers used the term *water*, as in "a gem of the finest water",<sup>[5]</sup> to express the combination of two qualities: color and clarity. Normally, in the grading of colored gemstones, color is by far the most important criterion. However, in the grading of emeralds, clarity is considered a close second. A fine emerald must possess not only a pure verdant green hue as described below, but also a high degree of transparency to be considered a top gem.

In the 1960s, the American jewelry industry changed the definition of "emerald" to include the green vanadium-bearing beryl as emerald. As a result, *vanadium emeralds* purchased as emeralds in the United States are not recognized as such in the UK and Europe. In America, the distinction between traditional emeralds and the new vanadium kind is often reflected in the use of terms such as "Colombian Emerald".<sup>!</sup>

## COLOR

In gemology, color is divided into three components: *hue*, *saturation*, and *tone*. Emeralds occur in hues ranging from yellow-green to blue-green, with the primary hue necessarily being green. Yellow and blue are the normal secondary hues found in emeralds. Only gems that are medium to dark in tone are considered emerald; light-toned gems are known instead by the species name *green beryl*. The finest emeralds are approximately 75% tone on a scale where 0% tone would be colorless and 100% would be opaque black. In addition, a fine emerald should be well saturated and have a hue that is bright (vivid). Gray is the normal saturation modifier or mask found in emerald; a grayish-green hue is a dull-green hue.

## CLARITY

Emerald tends to have numerous inclusions and surface breaking fissures. Unlike diamond, where the loupe standard, i.e. 10× magnification, is used to grade clarity, emerald is graded by eye. Thus, if an emerald has no visible inclusions to the eye (assuming normal visual acuity) it is considered flawless. Stones that lack surface breaking fissures are extremely rare and therefore almost all emeralds are treated ("oiled", see below) to enhance the apparent clarity. The inclusions and fissures within an emerald are sometime described as "jardin" (French for 'garden'), because of their mossy appearance. Imperfections are unique for each emerald and can be used to identify a particular stone. Eye-clean stones of a vivid primary green hue (as described above), with no more than 15% of any secondary hue or combination (either blue or yellow) of a medium-dark tone, command the highest prices.<sup>[6]</sup> The relative non-uniformity motivates the cutting of emeralds in cabochon form, rather than faceted shapes.

Faceted emeralds are most commonly given an oval cut, or the signature emerald cut, a rectangular cut with facets around the top edge.

## TREATMENTS

Most emeralds are oiled as part of the post-lapidary process, in order to fill in surface-reaching cracks so that clarity and stability are improved. Cedar oil, having a similar refractive index, is often used in this widely adopted practice. Other liquids, including synthetic oils and polymers with refractive indexes close to that of emerald, such as *Opticon*, are also used. These treatments are typically applied in a vacuum chamber under mild heat, to open the pores of the stone and allow the fracture-filling agent to be absorbed more effectively. The U.S. Federal Trade Commission requires the disclosure of this treatment when an oil treated emerald is sold. The use of oil is traditional and largely accepted by the gem trade, although oil treated emeralds are worth much less than un-treated emeralds of similar quality. Other treatments, for example the use of green-tinted oil, are not acceptable in the trade. Gems are graded on a four-step scale; *none*, *minor*, *moderate* and *highly* enhanced. These categories reflect levels of enhancement, not *clarity*. A gem graded *none* on the enhancement scale may still exhibit visible inclusions. Laboratories apply these criteria differently. Some gemologists consider the mere presence of oil or polymers to constitute enhancement. Others may ignore traces of oil if the presence of the material does not improve the look of the gemstone.



**Brazilian Emerald**



**Columbian Trapiche Emerald**

## EMERALD MINES

---

Emeralds in antiquity have been mined in Egypt since 1500 BCE, and India, and Austria since at least the 14th century CE. Colombia is by far the world's largest producer of emeralds, constituting 50–95% of the world production, with the number depending on the year, source and grade. Emerald production in Colombia has increased drastically in the last decade, increasing by 78% from 2000 to 2010. The three main emerald mining areas in Colombia are Muzo, Coscuez, and Chivor. Rare "trapiche" emeralds are found in Colombia, distinguished by ray-like spokes of dark impurities.

Zambia is the world's second biggest producer, with its Kafubu River area deposits (Kagem Mines) about 45 km (28 mi) southwest of Kitwe responsible for 20% of the world's production of gem quality stones in 2004. In the first half of 2011 the Kagem mines produced 3.74 tons of emeralds.

Emeralds are found all over the world in countries such as Afghanistan, Australia, Austria, Brazil, Bulgaria, Cambodia, Canada, China, Egypt, Ethiopia, France, Germany, India, Italy, Kazakhstan, Madagascar, Mozambique, Namibia, Nigeria, Norway, Pakistan, Russia, Somalia, South Africa, Spain, Switzerland, Tanzania, the United States, Zambia, and Zimbabwe. In the US, emeralds have been found in Connecticut, Montana, Nevada, North Carolina, and South Carolina. In Canada, in 1997 emeralds were discovered in the Yukon.

## EMERALD IN DIFFERENT CULTURES, AND EMERALD LORE

Emerald is regarded as the traditional birthstone for May as well as the traditional gemstone for the astrological signs of Taurus, Gemini, and sometimes Cancer. One of the quainter anecdotes about emeralds was told by the 16th-century historian Brantôme, who referred to the many impressive emeralds the Spanish under Cortez had brought back to Europe from Latin America. On one of Cortez's most notable emeralds he had the text engraved, *Inter Natos Mulierum non sur-rexit mayor* ("Among those born of woman there hath not arisen a greater," Matthew 11:11) which referred to John the Baptist. Brantôme considered engraving such a beautiful and simple product of nature sacrilegious and considered this act the cause for Cortez's loss of an extremely precious pearl (to which he dedicated a work, *A beautiful and incomparable pearl*), and even for the death of King Charles IX of France, who died soon afterward.

The chief deity of one of India's most famous temple, the Meenakshi Amman Temple in Madurai, is the goddess Meenakshi, whose idol is traditionally thought to be made of emerald.



**The Chalk Emerald Ring**



**Emerald Crystal in  
Calcite Matrix**



**5-Carat Emerald from Mexico**



**Gachala Emerald**

## JR. ROCKHOUNDS DISCOVER FOSSILS

On Saturday, March 4<sup>th</sup>, Mary Fisher held her monthly Junior Rockhound meeting giving a talk on fossils. To demonstrate how difficult it to dig for fossils, she gave each kid a chocolate chip cookie not to eat but as a very effective learning tool. Each was given a toothpick and told to imagine that the little chocolate chips were the fossils and that the cookie was the matrix.

The challenge to each was to carefully dig out the chips from the cookie without destroying them. The kids all thoroughly enjoyed the challenge, especially since they got to eat their "fossils".





# Dixie Mineral Council Field Trips

## The Southeast Federation of Mineralogical Societies, Inc



The Friendly Federation - Founded in 1976 to serve  
DMC Program of the SFMS Field Trip Committee  
Copyright © All rights reserved.

### An Official Field Trip of the Columbia Gem and Mineral Society (Columbia, SC)

Saturday, April 15, 2017  
8:00 AM – 4:00 PM Eastern Time  
Sharpes Emerald Prospect  
Alexander County, NC  
**Registration Required**

**Fee:** \$25/day for adults, \$20 per day for MAGMA paid members. Children 12 years of age or younger are free but must be accompanied by guardian

**TRIP:** Sharpes Emerald Prospect is operated in association with the Mountain Area Gem and Mineral Association (MAGMA). The club has been generous enough to allow CG&MC to host a field trip at their site. The mine is located in what is considered the most productive emerald mining district in North America. Emeralds are yet to be found, but there is current mineral finds of glass-clear tessin, smoky quartz, tourmaline, muscovite mica, beryl, and other minerals are in abundance. The mine is geared with rockhounds and collectors in mind, and is not salted with material from offsite.

**COLLECTING:** Mining and gathering can suit a variety of styles. Hard rock digging is available in pits and trenches throughout the site. Less rigorous collecting can be found by sifting and gathering in dump piles on the property. All areas of the min are open to collectors and new areas are opened regularly.

**BRING:** Only hand tools are allowed on site – shovel, pick, hammer, chisel, etc. No power equipment or heavy machinery. Buckets, sifting screens, etc are also useful. Spring weather is unpredictable, so come prepared with season appropriate clothes, sensible footwear, **protective eyewear**, and raingear if the forecast indicates poor weather. No alcohol is allowed on site, and mine owners request that no garbage is left on the premises.

**REQUIREMENTS:** All visitors must **pay fee** and sign **release form** before digging. Disclosure forms and payment can be brought on day of field trip or sent in advance to:

Hiddenite Gems Investment Group  
PO Box 542  
Leicester, NC 28748

**SPECIAL CONDITIONS:** Protective equipment such as goggles/eyewear, boots, and gloves are recommended.

**REGISTRATION:** Advance registration is not required, but release form must be completed.

**CHILDREN :** Children are allowed, but anyone 12 years of age or under must be accompanied by adult.

**PETS :** No

**FACILITIES:** None – There is a gas station a mile down the road with bathrooms, drinks and snacks.

**DIRECTIONS :** From I-40, take exit 132 toward NC-16. Follow NC-16 North to Hwy-64 East. Turn left on Prichard Lane. Look for sign saying “SHARPES” on right side of road by entrance to mine.

**CONTACT:** Prior to event, Sam Baker (704) 516-9649.  
On day of event: Murray Simon (704) 543-6651

## UPCOMING SHOWS

FORTY-SEVENTH ANNUAL  
UNIFOUR GEM, MINERAL,  
BEAD, FOSSIL, AND  
JEWELRY SHOW



March 24,25, 26 2017

**HOURS** Fri. 9:00 a.m. til 6:00 p.m. Exit 125, I-40 next to Interstate  
Sat. 9:00 a.m. til 6:00 p.m. (Just off I-40 with entrances from  
Sun. 10:00 a.m. til 5:00 p.m. Lenoir Rhyne Boulevard and Highway 70

**PLACE:** HICKORY METRO CONVENTION CENTER

Hosted by CATAWBA VALLEY GEM & MINERAL CLUB, INC.

**IF YOU HAVE NOT PAID YOUR  
DUES, THEY ARE OVERDUE!**