



Goldrush Ledger

Charlotte Gem & Mineral Club Newsletter

March 2019

Prez Sez.....

March at Last! The days are longer and signs of springtime are starting to appear! Rock shows are just around the corner, and lots of plans are in the works for our club!

At the February meeting we announced the winners of the William Holland Scholarship Drawing - see inside for details.

A big Thank You to Lindsay Werden for his lively and informative presentation on Fossils. It was great to see the amazing hand-collected specimens that he brought—the result of many years of dedication to his hobby.

We are in for a treat at the March meeting, to hear Jason Smith talk about the unique geology of the Foote Mine area in Gaston County.

Our volunteers are busily preparing for the Catawba Valley Gem and Mineral Show in Hickory, NC from March 22 to 25. Come out to support our club!

Hope to see you all there!

Kim Gwyn

President

Charlotte Gem & Mineral Club

You might be a rockhound if...

*-- you know each state in the
US by rock types alone.*



Come out to see our club's booth at the Catawba Valley Gem and Mineral Show in Hickory, NC from March 22 to 25!

In This Issue

- Dues Are Due
- Digs and Shows
- Wm Holland Winners!



2019 CGMC Officers & Board

President

Kim Gwyn
gwynkim@gmail.com
(803)370-0244

Vice President

Martha Rogers

Secretary

Vickie Glover

Treasurer

Sam Baker

Directors at Large

Brad Glover
Mary Fisher
Anne Lockwood

Past President

Murray Simon

Club Chairpersons

Web Master

Kim Gwyn
gwynkim@gmail.com

Newsletter Editor

Mary Fisher

Geode Chair

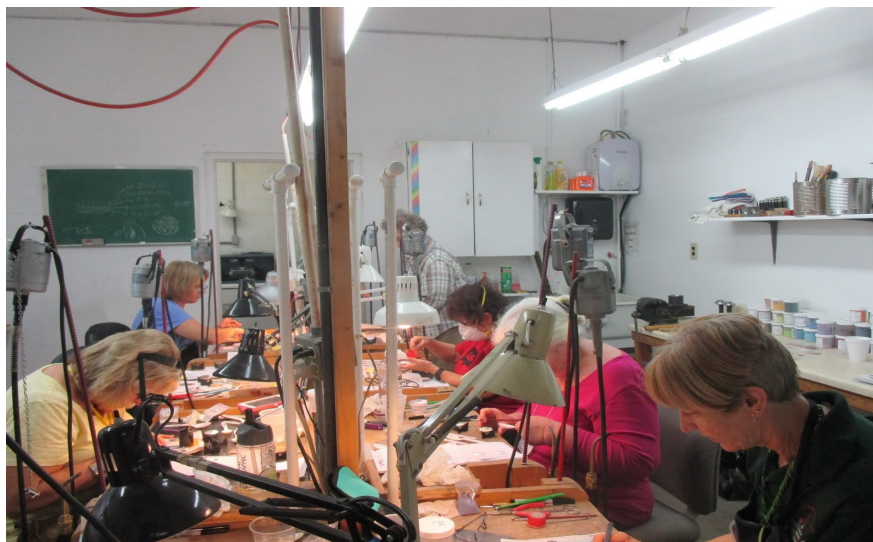
Jimmy Strickland

Speakers/Special Events

Anne Lockwood

Contact Info:

Charlotte@gem@yahoo.com



Enameling Class at William Holland School of Lapidary Arts

William Holland Scholarship Drawing

At the February Meeting, we announced the winners of our annual for the Pat Walker Lapidary Arts Scholarship. Mrs. Pat Walker is a long-time member and esteemed contributor to the success of our club, and we are pleased to name the scholarship in her honor this year!

The scholarship award is a one-week class including tuition, room and board at the William Holland School of Lapidary Arts.

And the winners are...

- ♦ Karen Allen
- ♦ Martha Rogers
- ♦ Greg Van Hoet

Congratulations to our winners!

The William Holland School of Lapidary Arts in northern Georgia runs classes from April through November. Week-long classes range from cabochoning, faceting, silversmithing and all types of jewelry making. They even have a Junior Rockhounds program!

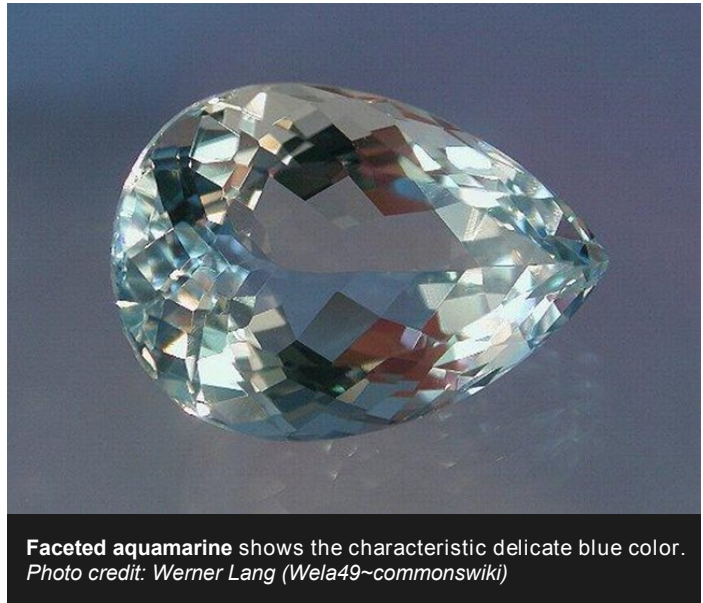
More information on available classes can be found at their website:

<https://lapidaryschool.org/classesbyweek.aspx>

Aquamarine - Birthstone for March

Aquamarine is a blue or cyan variety of beryl. The name is derived from latin: aqua marina, meaning "sea water". It occurs at most localities which yield ordinary beryl. The gem-gravel placer deposits of Sri Lanka contain aquamarine. Green-yellow beryl, such as that occurring in Brazil, is sometimes called chrysolite aquamarine.

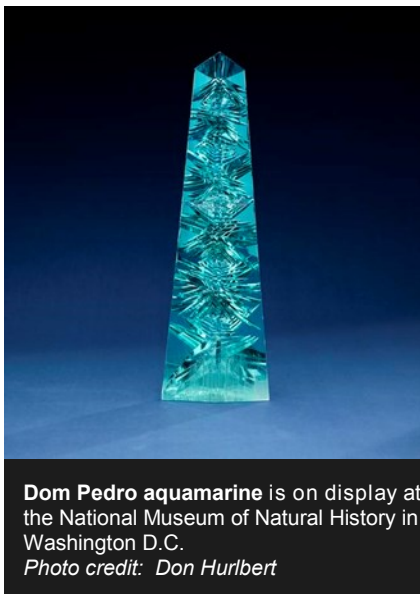
The deep blue version of aquamarine is called maxixe. Maxixe is commonly found in the country of Madagascar. Its color fades to white when exposed to sunlight or is subjected to heat treatment, though the color returns with irradiation.



Faceted aquamarine shows the characteristic delicate blue color.
Photo credit: Werner Lang (Wela49~commonswiki)

In the United States, aquamarines can be found at the summit of Mt. Antero in the Sawatch Range in central Colorado. In Wyoming, aquamarine has been discovered in the Big Horn Mountains, near Powder River Pass. Another location within the United States is the Sawtooth Range near Stanley, Idaho, although the minerals are within a wilderness area which prevents collecting. In Brazil, there are mines in the states of Minas Gerais, Espírito Santo, and Bahia, and minorly in Rio Grande do Norte. The mines of Colombia, Zambia, Madagascar, Malawi, Tanzania and Kenya also produce aquamarine.

The largest aquamarine of gemstone quality ever mined was found in Marambaia, Minas Gerais, Brazil, in 1910. It weighed over 243 lbs, and was 19 inches long and 16 1/2 inches in diameter.



Dom Pedro aquamarine is on display at the National Museum of Natural History in Washington D.C.
Photo credit: Don Hurlbert

The Dom Pedro aquamarine is the world's largest cut aquamarine gem. It was cut from a crystal originally weighing approximately 100 pounds (45 kg) and measuring more than 3 feet (0.91 m) in length. The stone was mined in Pedra Azul, in the state of Minas Gerais in Brazil around 1980, and named after the Brazilian emperors Pedro I and Pedro II. The blue-green gemstone was cut by Bernd Munsteiner into an obelisk form weighing 10,363 carats. The finished dimensions measure 14 inches tall by 4 inches wide.

The jewel was donated to the Smithsonian Institute by Jane Mitchell and Jeffery Bland. It is housed in the National Museum of Natural History's Janet Annenberg Hooker Hall of Geology.

Content source: Wikipedia

Upcoming Field Trips

Dixie Mineral Council Field Trips

Note: DMC Field Trips are for club members of DMC-affiliated clubs and their families only. Liability issues mean that these trips cannot be attended by the general public unless otherwise noted. Because this dig is not open to the public, full details are not published in our newsletter. As a benefit of membership, our club is a DMC-affiliated club and CGMC members who are current on their 2019 dues may attend.

Saturday, March 23

An Official Field Trip of the Tennessee Valley Rock and Mineral Club (Chattanooga, TN)

The **Tennessee Valley Rock and Mineral Club** is hosting a DMC dig for Fossils. Details to be Announced.

For more information about this dig, please contact charlottegem@yahoo.com.

Saturday, April 21

An Official Field Trip of the Georgia Mineral Society (Atlanta, GA)

The Georgia Mineral Society is hosting the DMC dig for April. Details to be Announced

For more information about this dig, please contact charlottegem@yahoo.com.

Upcoming Gem Shows

49th Annual Catawba Valley Gem, Mineral, Fossil, and Jewelry Show

Hickory Metro Convention Center

Hickory, NC

(Come and visit our club booth at the show!!)

March 22-24

Hours:

9am-6pm – Fri & Sat

10am-5pm – Sunday



Day Trip Ideas - Stone Mountain State Park

Located south of Sparta, NC, Stone Mountain is a dome-shaped granite mass rising 700 feet above its base.

The dome is the largest plutonic monadnock in the state. The light gray, medium-grained biotite granite forming the mountain developed from magma several miles deep in the earth. As erosion removed the overlying granitic rock, the resulting release in pressure caused the rock mass to move upward and intrude into older surrounding rocks sometime during the mid-Paleozoic era, 200 million years ago. Wolf Rock and Cedar Rock within the park are similar in structure. Stone Mountain was designated as a National Natural Landmark in 1974.

The park offers over 18 miles of hiking trails, along with camping, climbing, fishing, picnicking, horseback riding and more.

*Photo from Stone Mountain State Park website: www.ncparks.gov/stone-mountain-state-park
Description from ncparks.gov and NCPedia*

Dues are Due - Last Call!

Membership dues provide many benefits including access to drawings and special events such as the summer picnic, club field trips, and Dixie Mineral Council field trips.

Our annual dues are due by end of January. Dues are the same as previous years: \$20 for individuals and \$25 for the family. Membership forms are available at the club meeting, and also on our website at www.charlottegem.com. Please mail in your payment if you are unable to attend this month's meeting. We will update the club roster and email distribution list in March.



Copyright © 2019 Charlotte Gem and Mineral Club. All rights reserved.